

Valve connectors - SAC-3P-MS/BI-1L-Z SCO - 1458567

Please be informed that the data shown in this PDF Document is generated from our Online Catalog. Please find the complete data in the user's documentation. Our General Terms of Use for Downloads are valid (<http://phoenixcontact.com/download>)



Valve connectors, 3-position, Plug straight M12, A-coded, on Valve connector BI (11 mm), with 1 LED, connected with Z diode



Key Commercial Data

| | |
|--------------|---------------|
| Packing unit | 1 pc |
| GTIN | |
| GTIN | 4046356639019 |

Technical data

Dimensions

| | |
|-------------------------------|---------|
| Central screw valve connector | M3 x 29 |
|-------------------------------|---------|

Ambient conditions

| | |
|---------------------------------|-------------------------------|
| Ambient temperature (operation) | -25 °C ... 85 °C (valve plug) |
| Degree of protection | IP65 |
| | IP67 |

General

| | |
|------------------------------|------------------------------------|
| Rated current at 40°C | 4 A |
| Rated voltage | 24 V AC |
| | 24 V DC |
| Number of positions | 3 |
| Insulation resistance | ≥ 100 MΩ |
| Coding | A - standard |
| Standards/regulations | M12 connector IEC 61076-2-101 |
| Status display | Yellow LED |
| Protective circuit/component | Z diode |
| Pulse power W_{max} | 40 W (at 100 μs square-wave pulse) |
| Terminal voltage | 70 V (at 2 mA constant current) |

Valve connectors - SAC-3P-MS/BI-1L-Z SCO - 1458567

Technical data

General

| | |
|-----------------------------|--------------------------|
| Reverse voltage | 50 V |
| Overvoltage category | II |
| Degree of pollution | 3 |
| Connection method | M12 connector |
| Insertion/withdrawal cycles | 50 (Valve connector) |
| | ≥ 100 (M12 connector) |
| Torque | 0.6 Nm (Valve connector) |

Material

| | |
|--|------------------------------|
| Flammability rating according to UL 94 | HB |
| Contact material | CuSn |
| Contact surface material | Ni/Au |
| Contact carrier material | PA66 |
| Valve plug contact material | CuSn |
| Valve plug contact surface material | Sn |
| Valve plug contact insert material | PA 6.6 |
| Material housing valve plug | TPU |
| Material, knurls | Zinc die-cast, nickel-plated |
| Sealing material | TPU (Seal molded) |

Standards and Regulations

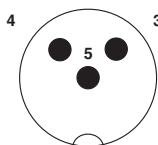
| | |
|--|-----------------|
| Standard designation | M12 connector |
| Standards/regulations | IEC 61076-2-101 |
| Flammability rating according to UL 94 | HB |

Environmental Product Compliance

| | |
|------------|---|
| REACH SVHC | Lead 7439-92-1 |
| China RoHS | Environmentally Friendly Use Period = 50 |
| | For details about hazardous substances go to tab "Downloads", Category "Manufacturer's declaration" |

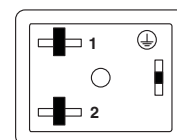
Drawings

Schematic diagram



Pin assignment M12 plug, 3-pos., A-coded, view male side

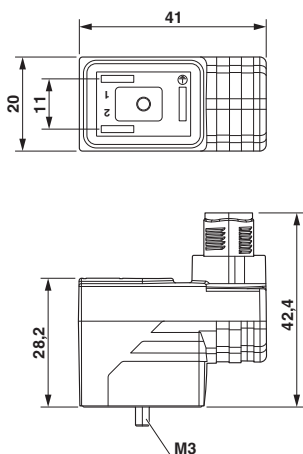
Schematic diagram



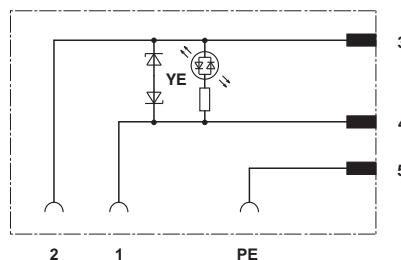
Valve connector pin assignment, type BI

Valve connectors - SAC-3P-MS/BI-1L-Z SCO - 1458567

Dimensional drawing



Circuit diagram



Approvals

Approvals

Approvals

DNV GL / CSAus / EAC

Ex Approvals

Approval details

| | | | |
|--------|--|---|------------|
| DNV GL | | http://exchange.dnv.com/tari/ | TAE00002K4 |
|--------|--|---|------------|

| | | | |
|-------|--|---|-------|
| CSAus | | http://www.csagroup.org/services-industries/product-listing/ | 13631 |
|-------|--|---|-------|

| | |
|--------------------|------|
| Nominal voltage UN | 24 V |
| Nominal current IN | 4 A |

| | | |
|-----|--|--------------------------|
| EAC | | RU C- DE.AI30.B.01102 |
|-----|--|--------------------------|

Phoenix Contact 2019 © - all rights reserved
<http://www.phoenixcontact.com>

PHOENIX CONTACT GmbH & Co. KG
Flachsmarktstr. 8
32825 Blomberg
Germany
Tel. +49 5235 300
Fax +49 5235 3 41200
<http://www.phoenixcontact.com>